

CENT@URO™



CENT@URO™

CENT@URO™

LOCKING-PROCEDURE FOR
REMOTE MONITORING OF
KEY STATUS

PATENTED BY ASI® (ITALY)

sicurezza della merce

**impedire l'apertura del container con una
chiave sotto controllo satellitare
non è così impossibile come immaginavi**

CENT@URO™

**[Sistema di gestione chiavi con
monitoraggio continuo via satellite]**

CENT@URO™

LOCKING-PROCEDURE
FOR REMOTE
MONITORING OF
KEY STATUS

PATENTED BY ASI® (ITALY)

DISTRIBUITO IN ITALIA DA:

ASI® ALTA SICUREZZA ITALIANA S.r.l. - www.asimtl.com © 2005

VIA J. RESSEL, 15 - 34018 SAN DORLIGO DELLA VALLE (TS)(i)

FAX +39 - 040 - 989.02.95

info@asimtl.com

marketing@asimtl.com



An ASSA ABLOY Group Company

The Mul-T-Lock name and the Muscleman Logo, and any other name, mark or logo used by Mul-T-Lock and marked by an ® or a ™ sign, are registered/pending trademarks of Mul-T-Lock Ltd. in various countries. Mul-T-Lock reserves the right to make any product improvements or modifications without prior notice.



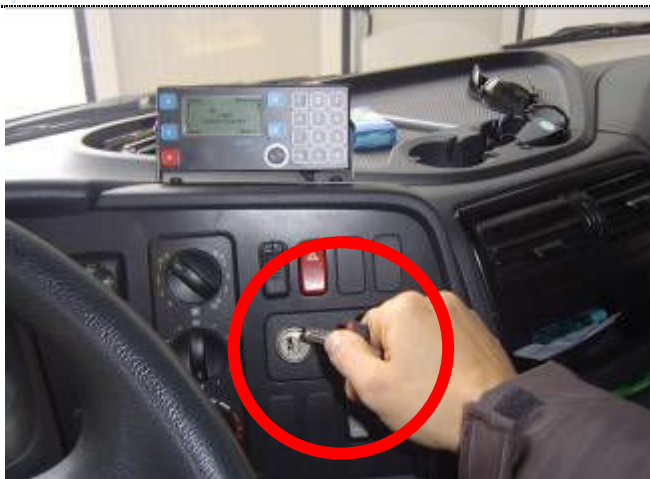
CHIAVE RUOTATA (NON ESTRAIBILE)



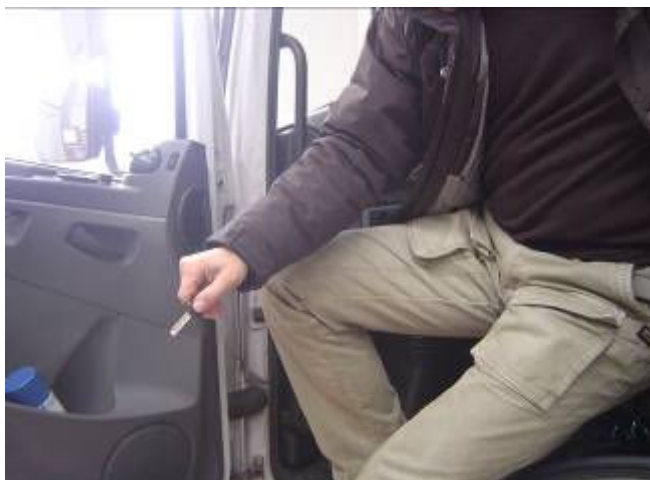
RUOTARE LA CHIAVE PER ESTRARLA



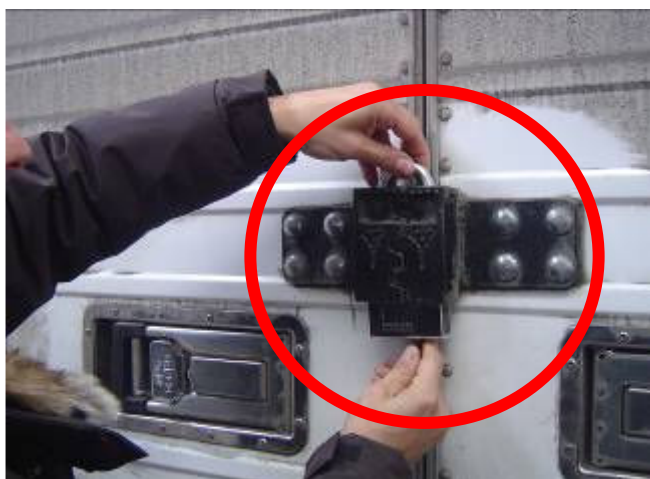
ESTRARRE LA CHIAVE



ESTRARRE LA CHIAVE



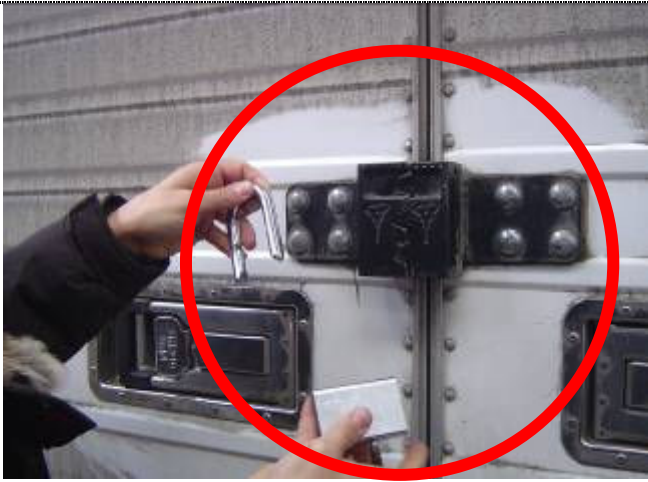
RECARSI VERSO IL LATO POSTERIORE DEL MEZZO / VANO DI CARICO



INSERIE LA CHIAVE NEL LUCCHETTO QUINDI APRIRE

PATENTED BY ASI® (ITALY)

CENT@URO™



ORA E' POSSIBILE APRIRE IL VANO DI CARICO

DISTRIBUITO IN ITALIA DA:
ASI@ ALTA SICUREZZA ITALIANA S.r.l. - www.asimtl.com © 2005
VIA J. RESSEL, 15 - 34018 SAN DORLIGO DELLA VALLE (TS)(i)
FAX +39 - 040 - 989.02.95
info@asimtl.com
marketing@asimtl.com

**MUL-T-LOCK**
An ASSA ABLOY Group Company

The Mul-T-Lock name and the Muscleman Logo, and any other name, mark or logo used by Mul-T-Lock and marked by an ® or a ™ sign, are registered/pending trademarks of Mul-T-Lock Ltd. in various countries. Mul-T-Lock reserves the right to make any product improvements or modifications without prior notice.

